

# FAIRFIELD'S LACUNA PLAT 4

A PART OF BALMORAL COUNTRY CLUB P.U.D.  
PALM BEACH COUNTY, FLORIDA.  
SHEET 2 OF 2 JUNE, 1988

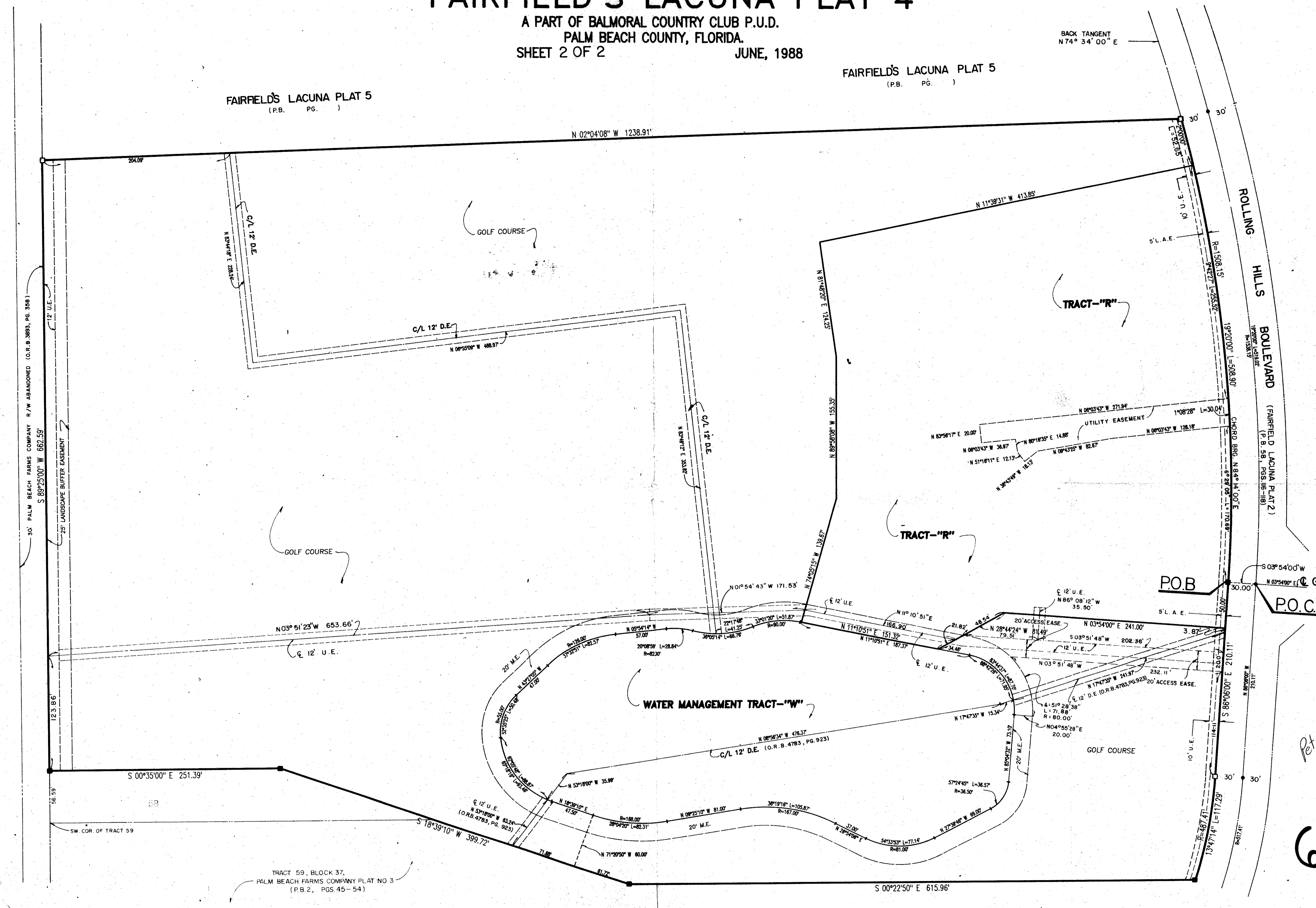
FAIRFIELD'S LACUNA PLAT 5  
(P.B. PG. )

FAIRFIELD'S LACUNA PLAT 5  
(P.B. PG. )

STATE OF FLORIDA  
COUNTY OF PALM BEACH  
This Plat was filed for record at \_\_\_\_\_  
M. this \_\_\_\_\_ day of \_\_\_\_\_ 19\_\_\_\_  
and duly recorded in Plat Book No. \_\_\_\_\_  
on Page \_\_\_\_\_  
John B. Dunkle, Clerk of the Circuit Court  
By \_\_\_\_\_ D.C.

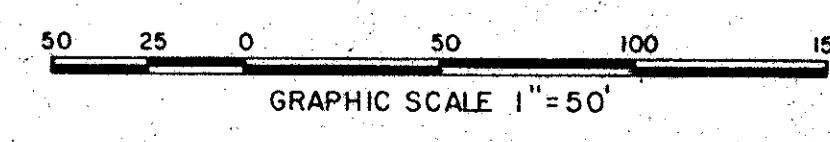
*Handwritten:* SUBDIVISION # Fairfield's Lacuna # 4  
PAGE 15  
BOOK 15  
PAGE 170A  
RT 81-233  
33463  
COURT 2 49  
P.O.B. NAME Balmoral

*Handwritten:* TAZ 740  
9/15/82



TRACT 59, BLOCK 37,  
PALM BEACH FARMS COMPANY PLAT NO 3  
(P.B. 2, PGS. 45-54)

TRACT 38, BLOCK 37,  
PALM BEACH FARMS COMPANY PLAT NO 3  
(P.B. 2, PGS. 45-54)



*Handwritten:* 61/15  
Ret-81-233

**Landmark Surveying & Mapping Inc.**  
1850 FOREST HILL BOULEVARD  
PH. (305) 437-5100 SUITE 100 W.P.B. FLORIDA  
**FAIRFIELD'S LACUNA PLAT 4**